



129-131 Nathan Way  
West Thamesmead Business Park  
London SE28 0AB

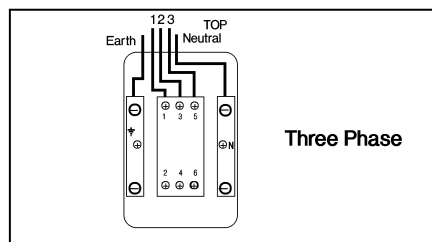
## Opening Instructions

Your Priorclave Autoclave is electrically locked. In order to open it and access the full operating instructions it will first be necessary to connect it to a suitable electrical supply as follows:

To connect your Priorclave to the power supply simply connect a suitable cable from your isolator to the isolator at the rear of the unit. Wiring for three phase supplies is as shown in the diagram.

- **3 PHASE - 10.5 kW HEATING AND 21 kW HEATING**

The power supply should be a 3 phase and neutral isolated supply, rated at 15 Amps per phase for 10.5 kW heating or 30 Amps per phase for 21 kW heating and connected to the isolator below. Sufficient length of cable should be used to allow the autoclave to be pulled out and worked on from the back. The cable used to the earth line and neutral feeds should be capable of carrying the per phase amperage of the supply. The neutral line must be nominally at earth potential and must **NOT** be fused. This equipment must be earthed.

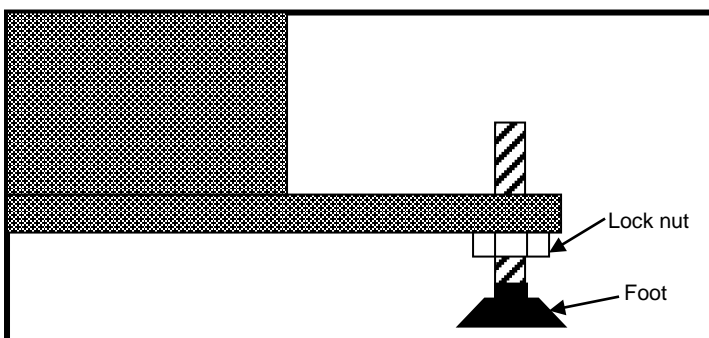


After connecting the autoclave to a suitable power supply it can be opened as follows:

1. Check electricity supply is ON.
2. When opening the autoclave for the first time the error code **F004** will be showing in the temperature display. You may ignore this at this stage as opening the autoclave and filling it with water will reset this error. Press the 'door' button on the control panel there will be a bleep. Wait for about 20 seconds short time until there is another bleep and the door indicator illuminates. The door button can now be pressed again to release the lock.
3. Open the pressure door by undoing the lower black handwheel first followed by the red safety handwheel. With the door free, carefully pull open.

### Important Note – 160L & 230L Models

Before opening the door screw down the two anti-tip feet (fitted at the front of the autoclave) to floor level.



Once the autoclave has been finally positioned, these feet should be securely tightened onto the floor with a spanner. The lock nuts should then be tightened up to the bottom of the autoclave frame.